

STATE OF FLORIDA  
COUNTY OF PALM BEACH

This plat was filed for  
record at \_\_\_\_\_, this  
day of \_\_\_\_\_, 1994,  
and duly recorded in  
Plat Book No. \_\_\_\_\_ on  
Pages \_\_\_\_\_ thru \_\_\_\_\_.

MILTON T. BAUER  
Clerk Circuit Court

By: \_\_\_\_\_

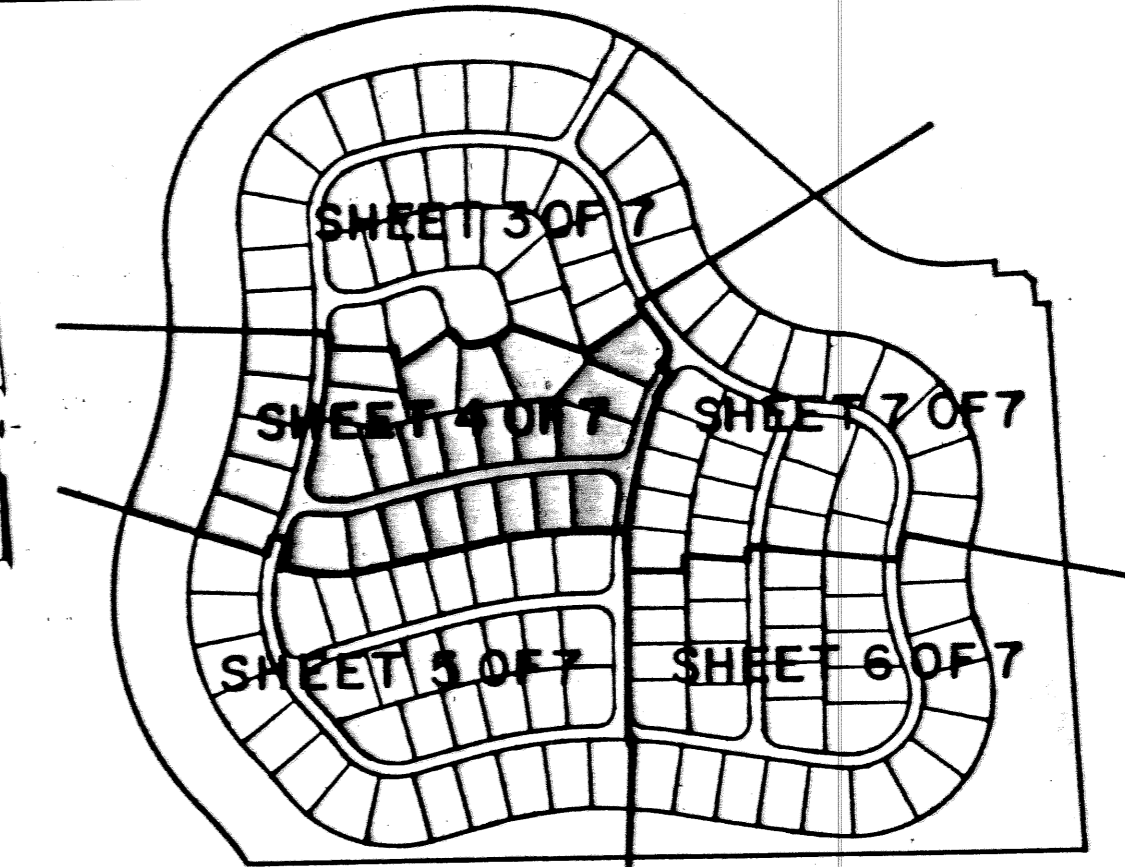
# OLIVE TREE - PARCEL 6B

A REPLAT OF PARCEL 6B OF  
OLIVE TREE - PHASE 6A OF THE RIVER BRIDGE P.U.D., (P.B. 71, PGS. 181 - 182)  
LYING IN SECTION 10, TOWNSHIP 44 SOUTH, RANGE 42 EAST

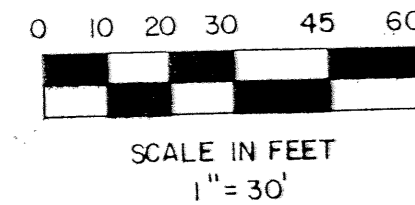
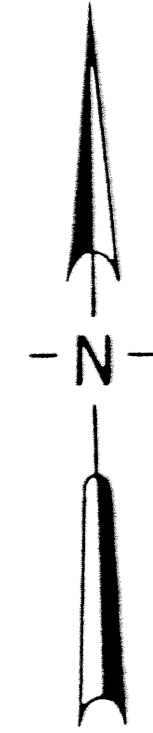
CITY OF GREENACRES, PALM BEACH COUNTY, FLORIDA.

JANUARY 1994

SHEET 4 OF 7

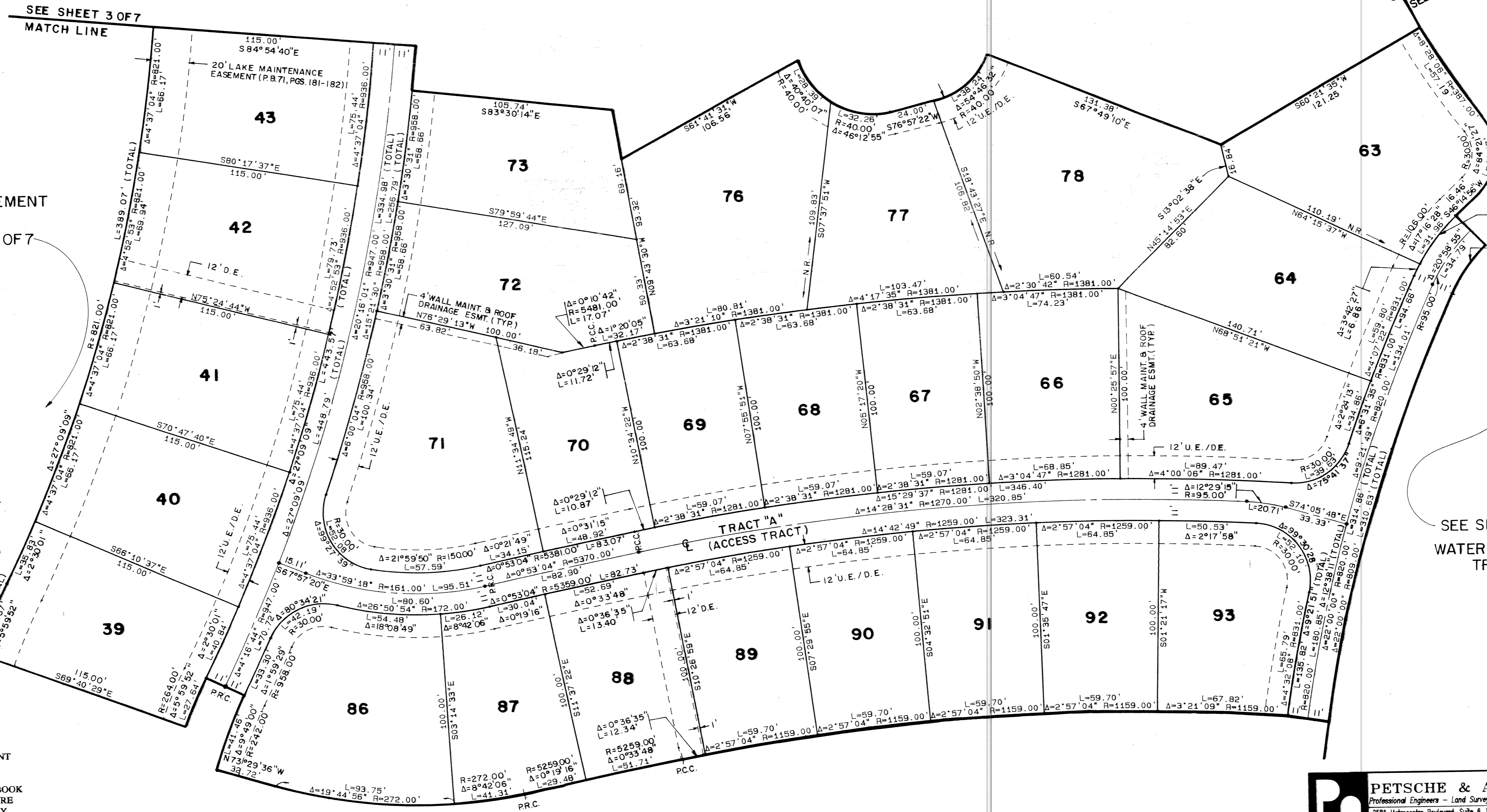


SHEET LOCATION MAP  
NO SCALE



WATER MANAGEMENT  
TRACT B  
SEE SHEET 2 OF 7

SEE SHEET 7 OF 7  
WATER MANAGEMENT  
TRACT B



**TYPICAL DETAIL n.t.s.**

4" WALL MAINTENANCE AND ROOF  
DRAINAGE EASEMENT  
(SEE DEDICATION No. 7)  
\* SEE INDIVIDUAL LOTS 65, 70 & 71  
FOR NON-TYPICAL 4" WALL MAINT &  
ROOF DRAINAGE ESMT. LOCATION.

**LEGEND**

- D.E. DRAINAGE EASEMENT
- U.E. UTILITY EASEMENT
- P.B. PLAT BOOK
- O.R.B. OFFICIAL RECORD BOOK
- P.C. POINT OF CURVATURE
- P.T. POINT OF TANGENCY
- P.O.C. POINT OF COMMENCEMENT
- P.O.B. POINT OF BEGINNING
- P.C.P. PERMANENT CONTROL POINT
- P.R.M. PERMANENT REFERENCE MONUMENT
- R/W. RIGHT-OF-WAY
- REF. REFERENCE
- SEC. SECTION
- TWP. TOWNSHIP
- RGE. RANGE
- P.L.S. PROFESSIONAL LAND SURVEYOR
- L.B. LICENSED BUSINESS
- TYP. TYPICAL
- N.R. NON-RADIAL

SUBDIVISION # Olive Tree Parcel 6B  
BOOK 72 PAGE 4  
FLOOD ZONE - ZONING  
QUAD # - ZIP CODE  
SE - PUD NAME c/greenacres

**PETSCH & ASSOCIATES, INC.**  
Professional Engineers - Land Surveyors - Development Consultants - Testing Services  
2581 Metrocentre Boulevard, Suite 6, West Palm Beach, Florida 33407 (407) 640-3800  
6799 Overseas Highway, Suite 7, Marathon, Florida 33050 (305) 743-5788

OLIVE TREE - PARCEL 6B

SECTION 10, TOWNSHIP 44S., RANGE 42E.  
CITY OF GREENACRES, FLORIDA

Drawn by:	Date:	SCALE:	JOB NUMBER:	SHEET	OF
M.E.H.	AUGUST 1993	1" = 30'	93-050-2	4	7
Designed by:	Checked by:				
	R. HAGLER				